

The Coins of the Dokkum (Klaarkamp) Hoard (1932)

Paul Torongo & Raymond van Oosterhout
© 2014

Hoard Deposited: c. 1362-1365
Klaarkamp Monastery
Currently in the collection of the Stichting Musea Noardeast Fryslân (Museum Dokkum)
Dokkum, The Netherlands
Research viewing: 25 March, 2014

The hoard was discovered in 1932 on the site of the former Klaarkamp Monastery near Dokkum. The coins had been buried in a wooden chest which had since all but disintegrated.

Klaarkamp was a Cistercian monastery founded circa 1165. It was situated on a mound (*terp*) near Rinsumageest and Dokkum. In about 1580, the monastery was demolished during the Dutch Revolt, and the hill was further reduced during the 19th and 20th centuries. In 1932, the remnants of a wooden chest containing a coin hoard was found on the site. The hoard consisted for the most part of 14th century, Flemish *leeuwengroten*, as well as a number of gold coins that disappeared at some point during the Second World War. In 1970, the *leeuwengroten* were given to the museum “Het Admiraliteitshuis” in Dokkum ^{[1][2]} (now the Stichting Musea Noardeast Fryslân (Museum Dokkum).

Although the hoard had been previously studied and described (albeit superficially) by Van Gelder ^[4], the authors of the current work chose not rely upon data from any previous reports but rather inspected each coin individually anew, in order to produce an objective report on the types of coins present in the hoard.

All 344 coins were inspected, weighed and photographed by authors Van Oosterhout & Torongo on 25 March, 2014. The weights given have a margin of error of +/- .01 grams. (A complete list of the coins and their weights can be found in the appendix.)

The original find was comprised of:

— **15 gold *écus*** (whereabouts unknown)

These coins were described by an unnamed researcher as being French *chaises d’or*, struck for Philip VI (1328-1350). The coins were described by the Nederlandsch Bank as “Burgundian coins” ^[4]. At this point it is no longer possible to verify exactly what type(s) of gold coins were in the hoard, whether they were indeed all French, or whether other types of coins were also present.

— **344 silver (or billon) *leeuwengroten*, *gros au lions* or *gros compagnons***
divided as follows:

- 1 Duchy of Brabant
- 13 County of Holland
- 1 County of Réthel
- 329 County of Flanders

DESCRIPTION OF THE COINS

The obverse of the coins shows a rampant lion left, surrounded by a clockwise legend that begins with an initial cross, followed by the word MONETA. Around this is a border of 1 small lion and 11 leaves, each itself enclosed in a partial circle. Between the legend and the outer border is a ring of oblong pellets.

The reverse has an outer and an inner legend. The central type is a cross (a “medium” cross), the arms of which break into the inner legend. The legends are separated by a ring of oblong pellets. There is another ring of oblong pellets beneath the inner legend. (There are rings of pellets along the outer edges of both faces as well, but these are often not visible on the coins themselves.)

It should be noted that some numismatists prefer to view the lion side as the reverse and the cross side as the obverse. The approximate diameter of a *leeuwengroot* is 27 mm.

The reverse, outer legend is the same for all 344 coins:

REV ✠ BNDICTV : SIT : NOME : DNI : NRI : IHSV : XPI

BeNeDICTVs SIT NOMEn DomiNI NostRI IHsV CHRIsTi
Blessed be the Name of Our Lord Jesus Christ

The obverse legend differs from region to region, as does the reverse, inner legend.



K030

CATALOG of COINS:

*(K000 numbers refer to the photographs made by the authors of the coins in the hoard,
Collection Stichting Musea Noardeast Fryslân (Museum Dokkum).*

*The coins were viewed in groups of forty pieces at a time;
it was therefore not possible to arrange them in any kind of comprehensive order.)*

Duchy of Brabant: 1 coin

Joanna, Duchess of Brabant (1355-1406)

MONETA FILForDensis
IOhanna DVCissa LOTier BRABantiae

Coin of Vilvoorde
Joanna, Duchess of Lotier, Brabant

Lothier is Lower Lorraine (Lower Lotharingia), or Neder-Lotharingen.

Vanhoudt Type G 295

1 example: 2.71 g. (K083)

OBV . ✠ **MONETA** ✠ **FILFD**
REV **O'DV C'LO T'BR AB'I**



K083

County of Holland: 13 coins

William V, Count of Holland and Zeeland (1350-1389)

**MONETA HOLANDiae
GVILLELMVS DVX COMES**

*Coin of Holland
William, Duke, Count*

Unlike the other coins in the hoard, the *leeuwengroten* of Holland present do not have an annulet T in MONETA. (Some *leeuwengroten* from Holland do have an annulet T.) The Holland coins also have a round O in COMES. The marks between MONETA and HOLAND can look notoriously similar to one another, whether intended as: ✕, + or ✚.

Grolle Type 17.2.2

1 example: 2.93 g. (K090)

OBV	✕ • MONETA ✕ HOLAND'
REV	GVIL LELM DVX:O COMES



K090

2 examples: 2.43 g. (K005)
2.51 g. (K018)

OBV	.✠•MONEA [✠]HOLLAND'
REV	GVIL LELM DVX:D OMES

(These two coins may be the same as K090 above.)



K005



K018 The border leaves of K018 are unusual and not voided.



1 example: 2.75 g. (K047)

OBV	✠ • MONETA ✠ HOLAND'
REV	GVIL LELM DVX:O OMES

(There may be a pellet to the left of the cross as well.)



K047

1 example: 2.79 g. (K006)

OBV	[...] MONET[✠ ...] HO[LAND]
REV	GVIL LELM DVXC OMES

(The mark between MONETA and HOLAND is completely illegible.)



K0006

2 examples: 2.69 g. (K173)
2.73 g. (K222)

OBV

• ✠ MONETA + HOLAND'

REV

GVIL LELM DVXD OMES

(K173: The pellet to the left of the cross is under the **D** of **HOLAND**.)



K173



K222

1 example: 2.45 g. (K086)

OBV

.✠ MONETA + HOLAND'

REV

GVIL LELM DVXC OMES

(The crossbar of the A of MONETA is faint.

The pellet to the left of the cross is under the D of HOLAND.

There may be a double-pellet (colon) after DVX, otherwise the same as K173 & K222 above.)



K086

1 example: 3.04 g. (K200)

OBV

.✠ MONETA + HOLAND'

REV

GVIL LELM DVX:D OMES



K200

1 example: 2.69 g. (K340)

OBV

• ✠ MONETA : HOLLAND'

REV

GVIL LELM DVX:D OMES



K340

1 example: 2.21 g. (K087)

OBV

✠ MONETA : HOLLAND'

REV

GVIL LELM DVX:D OMES

(There may be a pellet to the left of the cross, making this coin the same as K340 above.)



K087

1 example: 2.56 g. (K131)

OBV	✠ MONET[Æ ...] HOLAND'
REV	GVIL LELM DVX:D OMES

(The mark between MONETA and HOLAND is all but illegible.)



K131

1 example: 2.48 g. (K190)

OBV	[✠] MONETA [✠] HOLAN' & Z[P]
REV	GVIL LELM DVXC OM[ES]

[i.e. MONETA HOLANDiae & Zelandiae]

(There may be a pellet over the L in HOLAND.
Strangely, the beginning of the reverse, outer legend is not above the
beginning of the inner legend.)



K190

County of Réthel: 1 coin

Louis II of Mâle, Count of Rethel (1346-1384)

Obverse border of 1 lion and 11 leaves

**MONETA FLANDriae & Rethel
LVDOVICvs COMES**

1 example: 2.56 g. (K089)

OBV	✠ MONETA ✠ FLAND' & R'
REV	LVD OVI C'DO MES

Gaillard Type 232



K089

County of Flanders: 329 coins

Louis II of Mâle, Count of Flanders (1346-1384)

**MONETA FLANDRiae
LVDOVICvs COMES**

*Coin of Flanders
Louis, Count*

Because of existing records from medieval Flanders, we know that there were eight separate issues of the *leeuwengroot* during the reign of Louis II of Flanders (Louis of Mâle), the first issue actually beginning under his father, Louis of Nevers (1322-1346). Each successive issue was struck from either silver of a fineness reduced from that of the previous issue, or with a reduction in the weight of the coins, or both. Such debasement of the currency was common practice in the Middle Ages.

We know that these issues of *leeuwengroten* were marked by the mint through the use of special characters on the coins, for example: an **A** without a crossbar, an **L** with a pellet over the ‘foot’, the direction of the stem of the leaf between **MONETA** and **FLAND**, or the change from a long **O** to a round **O**. But since these were “secret” characters for the authorities and not for the general public, the records do not indicate which mint signs went with which issues, and numismatists are left to try and piece together the chronology from the information gathered from researching coin hoards.

All 329 of the Flemish coins in the hoard have a “long” **O** in **COMES**, as opposed to the round **O** seen in some of the early *leeuwengroot* issues of Louis of Mâle.

12 coins in the hoard were partially or completely illegible and in such poor shape that no determination was possible beyond the fact that they were struck for Louis of Mâle. Most, if not all, are probably of the “common type” described below (Issue V, Type 12). However, it cannot be stated with 100% certainty that there are not examples among these 12 illegible coins that have distinguishing marks which would indicate issues other than V-12.

Another 25 coins had indeterminate **A**’s as to whether or not a crossbar was present. These, too, are most likely of the “common type”, but complete certainty is out of the question. 24 more coins have illegible or indistinct leaves between **MONETA** and **FLAND**, and another 4 had unclear areas around the initial crosses on the obverse.

The direction of the leaf stem for these 65 coins then becomes a moot point. However, all the stems either point to the **A** of **MONETA**, or they are unclear (K058 might have a straight stem).

The following Flemish coins were encountered in the hoard:

Issue ?

Type ?

65 examples: illegible and unusable coins (see appendix for weights)



K284

L's WITHOUT PELLETS: 212 coins

Issue III : {28 May, 1351 – 9 May, 1353}

Type 9

2 examples: 3.27 g. (K079)

2.55 g. (K146)

OBV

•✠• MONETA + FLAND'

REV

LVD OVI D^oCO MES

(The leaf stems on these two coins are clearly pointing to the F of FLAND.
Although there is likely no crossbar in the A of MONETA on K079, it is
not 100% certain.)



K079



K146

Issue III

Type 9 or 10

1 example: 2.90 g. (K239)

OBV

•✠• MONET[Λ + F]ΛΛND'

REV

ΛVD OVI QꝰCO MES

(Type 10 has a straight-stemmed leaf after MONETA; K239 is unclear.)



K239

Issue IV : {7 September, 1353 – 24 October, 1354}
 Type 11

2 examples: 2.70 g. (K310)
 2.31 g. (K211)

OBV • ✠ MONET[Æ + FLÆ]ND'
 REV LVD OVI DꝰCO MES

(Although the leaf stems on these two coins appear to be pointing to the F of FLAND, neither legend is particularly clear or certain.
 Issue IV was a small issue (318,120 pieces), and coins of this issue are extremely rare.)



K310



K211

Issue V : {20 December, 1354 – 18 September, 1359}

Type 12

191 examples: (see appendix for weights)

OBV	• ✠ MONETA + FLAND'
REV	LVD OVI C ^o MES

This is in fact the most common type existing today, and not suprisingly comes from the issue of *leeuwengroten* with the greatest number of coins produced (22,644,213).

Of these 191 coins, 89 were clear enough that there is no doubt that crossbars are present in both A's. The remaining 102 coins all had one clear crossbar, while the second varied from 'probable' to illegible. It is possible that some of these coins have no crossbar in MONETA, which would put them in class VI-14.



K144

A few of the coins looked as though they may be medieval counterfeits, plated with silver or even tin (e.g. K129, 2.37 g.).



K129

Among these coins (Issue V-12) were found several groups of coins that seemed to show similarities in the dies, or in the punches used to make the dies. These sub groups may have no further import in the classification of the *leeuwengroot*, and merely show evidence of the same hand having made the punches or dies. On the other hand, future comparison of a large enough number of dies might lead to more conclusions as to the chronological order of the coins.

The first sub-group contains 29 coins, (although a number of the illegible coins may belong to this group as well). This group is characterized by a reverse legend containing an **L** with a distinct, large serif: **Ɑ**, and an unusually large **V**. In addition, the letters MES look similar from coin to coin; they have a rather jumbled look to them, and the **E** and **S** are often merged with one another. Coins of this sub-group are somewhat less common generally, but have been seen outside of the Klaarkamp Hoard (e.g. Sneek, 1955).



K004



K045

The second group is very small and contains only 5 coins. It is characterized by what appears to be a broken punch used to make the **Ɲ** on the obverse: **Ɲ**. The rest of the coin faces look similar as well, but the “broken” N is the main distinguishing feature. There are a few of these coins in the Sneek Hoard as well.



K229



K231

The remaining 157 coins in the hoard from Issue V-12 show no characteristics that particularly distinguish them from the vast majority of the coins of that issue, with the exception of the following two coins (included in the 191 total V-12 coins) K161 & K104:

Issue V

Type 12 countermarked

1 example: 2.59 g. (K161)

OBV	• ✠ MONETA + FLAND'
REV	LVD OVI D ^o MES

This coin is possibly the most unusual in the entire hoard.

Although it is from Issue V, Type 12 like so many others, this particular piece has been counterstamped on the obverse with a 5-pointed star in the center of the lion. This is highly unusual for a coin of this period, since counterstamps are not usually seen until much later, and even then not often on *leeuwengroten* (the authors know of no other such specimen.) The meaning and origin of this countermark are unknown.



K161

Issue V

Type 12 ? Variant?

1 example: 2.47 g. (K104)

OBV	•✠ MO[NE]TA ✠ FLAND'
REV	LVD OVI CD CO• MES

(There appears to be a pellet after the O, which may be no more than a meaningless die-cutter's error.)



K104

Issue V
Type 13

2 examples: 2.36 g. (K203) broken coin
1.68 g. (K338) medieval counterfeit?

OBV	• ✠ MONETA + FLAND'
REV	LVD OVI D ^o MES

(K338 looks as though it is possibly a copper piece that has been coated with silver. The weight is very low.)



K203



K338

Issue VI : {22 September, 1359 – 4 December, 1361}
 Type 16

14 examples total:

4 examples: 2.41 g. (K312) / 2.43 g. (K287) / 2.68 g. (K061) / 2.71 g. (K122)

OBV	• ✠ MONETA + FLAND'
REV	LVD OVI D ^o MES



K061



K287

Issue VI, Type 16 (cont.)

10 examples:

OBV • ✠ MONETA + FLAND'
 REV LVD OVI CꝛCꝛ MES

2.07 g. (K156) / 2.53 g. (K220) / 2.54 g. (K101) / 2.57 g. (K011; K098; K135)
 2.66 g. (K221) / 2.70 g. (K171) / 2.72 g. (K331) / 2.73 g. (K166)

These 10 coins show distinct similarity with one another. The N's have large pellets on the right 'foot'. The C's are not sharp, instead the bar that closes them has two prominent pellets. These characteristics may indicate nothing more than the hand of the die-cutter. Three similar coins can be found in the Sneek Hoard (1955).



K156

L's WITH PELLETS: 52 coins

If there is a pellet over the foot of the **L** in both **FLAND** and **LVDOVICVS**: **⚭**, then the coin is from Issue VII. ^[2]

Coins of this issue are the only ones present in the Klaarkamp Hoard with an obverse, outer border of 11 leaves with 3 lobes: **⚭** (as opposed to 5 lobes): **⚭**.

Some (but not all) of the coins of Issue VII have distinctive **A**'s, which are only seen on coins of this issue: **⚭**. These **A**'s are present on several of the coins in this hoard (e.g. K257).

The **C**'s of this issue seem extremely sharp: **⚭**

Issue VII : {4 December, 1361 – 27 September, 1362}
Type 17

31 examples: (see appendix for weights)

OBV	• ⚭ MONETA + FLAND'
REV	LVD OVI QꝰCO MES



K017



K019



K073



K257

Issue VII
Type 18

? examples:

OBV • ✠ MONETA + FLAND'
REV LVD OVI CD DO MES

The only coin with a pellet L and clear indication of a missing A crossbar is the variant listed below, K163. There may well be coins of this issue and type in the hoard, but their attribution remains uncertain.

Issue VII
Type 18 (variant)

1 example: 2.75 g. (K163)

OBV • ✠ MONETA + FLAND'
REV LVD OVI CD DO MES

(The annulet A is possibly a die-cutter's error.
The L of FLAND has an unusually wide 'foot'.)



K163

Issue VII
Type 17 or 18

13 examples: (see appendix for weights)

OBV	•✠ MONET[...] ✠ FLAND'
REV	LDV OVI Q ^o CO MES

The A's of MONETA on these 13 coins are unclear; it cannot therefore be determined if they are Type 17 (A of MONETA with crossbar) or Type 18 (A of MONETA without crossbar).



K181



K336

Issue VII
Type 17 or 18

5 examples: 2.72 g. (K175, Type 17) / 2.74 g. (K117) / 2.63 g. (K206) / 2.48 g. (K052)
2.47 g. (K026)

OBV	• ✠ MONET[...] + F[L]AND'
REV	[L]VD OVI DꝰCO MES

The pelleted L's are not visible on these 5 coins, however they all have the 3-lobed leaves in the obverse border, as Issue VII coins have. In addition, 4 of the 5 have the distinctive A's of Issue VII previously mentioned. It seems likely that the L's of these 5 coins are indeed pelleted.



K052



K206

Issue VII ?

Type 17 or 18 variant?

1 example: 2.60 g. (K197)

OBV	•✠ MONET[A ✠ FLA]ND'
REV	LVD OVI CACO MES

K197 seems to have 5-lobed border leaves on the obverse. It is difficult to see any trace of a pellet over the **L** of FLAND, but the entire letter is unclear. The pellet over the **L** on the reverse definitely seems present, but it is small. This coin would seem to be either a variant, or some kind of anomaly; it is not impossible that it is a contemporary counterfeit or foreign imitation. Alternatively, there may be no pellet **L**'s at all, making this coin a simple V-12.



K197

Issue VII ?
Type 17 or 18 variant?

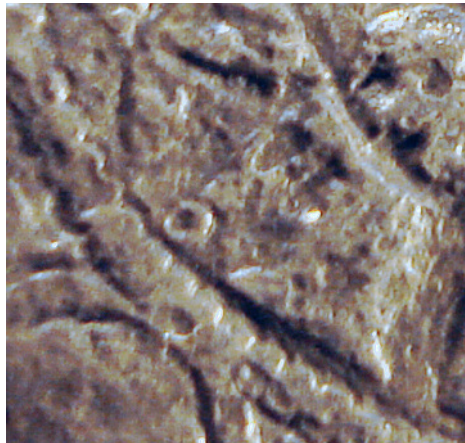
1 example: (2.33 g.) K323

OBV	• ✠ MONETA + FLAND'
REV	LVN OVI C ^o MES

(There seems to be an annulet over the L of FLAND, but it may just be a pellet.)



K323



(detail)

Issue VII ? variant?

1 example: (2.63 g.) K014

OBV	•✠ MONETA + FLAND'
REV	LVN OVI C ^o MES

(The leaf-stem seems to be straight.)



K014



(detail)

CONCLUSION

The Dokkum (Klaarkamp) Hoard (1932) is divided as follows:

1				Brabant : Joanna (1355-1406)
13				Holland : William V (1350-1389)
1				Rethel : Louis of Mâle (1346-1384)
329				Flanders : Louis of Mâle (1346-1384)
	212			without pellet L's:
		2		Issue III, Type 9
		1		Issue III, Type 9 or 10
		2		Issue IV, Type 11
		191		Issue V, Type 12:
			189	“common type”
			1	countermarked with a star
			1	variant? (pellet after O?)
		2		Issue V, Type 13
		14		A's without crossbars (Issue VI, Type 16):
			4	normal N's, sharp C's
			10	pellety N's and C's
	52			with pellet L's:
		31		Issue VII, Type 17
		12		Issue VII, Type 17 or 18
		5		Issue VII, Type 17 or 18 (pellets unclear)
		1		Issue VII, Type 18 (variant with annulet A?)
		1		5-lobed leaves in border
		1		Issue VII? (annulet L?)
		1		Issue VII? (straight stem?)
	65			illegible
		264		Flanders usable
	329			Flanders total
344				Hoard Total

Flanders

65 of the coins are in such poor condition that little or nothing can be learned from them. Of these, 12 are completely illegible. The remaining 53 yield some information, but certain vital characters are unreadable, making determination impossible.

212 coins have L's without pellets. Of these, 14 have A's without crossbars in both MONETA and FLAND.

3 coins have pellets left and right of the initial, obverse cross; of these, two have leaf stems that are clearly curved towards the F of FLAND.

191 coins have barred A's, a leaf stem curved toward the A of MONETA, and a pellet left of the initial, obverse cross (the "*common type*"). Of these, one obverse has been countermarked with a five-pointed star and another appears to have a pellet after the O of COMES.

There are 52 coins with pelleted L's. Although 5 coins have pellets that are not actually visible, other characteristics of the coins allow us to be fairly certain that the pellets were once there. 1 of these coins may have an annulet (ring) instead of a pellet over the L of FLAND, but it is difficult to be sure. 1 coin seems to have 5-lobed leaves in the obverse border, which is anomalous. 1 coin has an annulet A and a plain T.

NOTES

Minting of *leeuwengroten* in Flanders under Louis of Mâle: ^[2]

	Issue	no. of coins struck
1.	20 Jan. 1346 – 20 Nov. 1346	719,994
2.	24 Nov. 1346 – 27 May 1351	13,869,824
3.	28 May 1351 – 5 Sep. 1353	8,197,860
4.	7 Sep. 1353 – 24 Oct. 1354	318,120
5.	20 Dec. 1354 – 17 June 1358	22,644,213
6.	22 Oct. 1359 – 26 June 1361	9,681,000
7.	4 Dec. 1361 – 27 Sep. 1362	1,989,000
8.	1 Dec. 1363 – 2 Mar. 1364	456,300
	total	57,876,311

All photographs: Collection of the Stichting Musea Noardeast Fryslân (Museum Dokkum).
© 2014 Stichting Musea Noardeast Fryslân (Museum Dokkum)
Used with permission.

Conclusions as to which mintmarks correspond to which issues for Flemish coins have been drawn based on Haeck's *De leeuwengroten met het kruisje van Lodewijk van Male* ^[6].

The authors wish express their deepest thanks to G.I.W. Dragt and Anna Damsma of the Stichting Musea Noardeast Fryslân (Museum Dokkum).

LITERATURE:

[1]

Het klooster Klaarkamp en zijn muntschat

B.H.J. te Boekhorst

In *Nieuwsbrief Numismatische Kring Frisia*, n^o. 2, 2013

[2]

De schat van Clarus Campus

B.H.J. te Boekhorst

in *Muntkoerier*, n^o. 2, 1994, pp. 4-7

[3]

Recherches sur les Monnaies des Comtes de Flandre

Victor Gaillard

Ghent, 1852 & 1857

[4]

Dokkum 1932

H.E. van Gelder

in *Jaarboek voor Munten en Penningen* 56-57

1969-1970

pp. 36-39

[5]

De Muntslag van de Graven van Holland tot de Bourgondische Unificatie in 1434

(3 volumes)

J.J. Grolle

De Nederlands Bank N.V.

Amsterdam, 2000

ISBN 90-804784-3-1

[6]

De leeuwengroten met het kruisje van Lodewijk van Male – Een proeve van (her)classificatie

Aimé Haeck

supplement to *Jaarboek EGMP*

2013

[7]

Atlas der munten van België van de Kelten tot heden

Hugo Vanhoudt

Herent, 1996

ISBN 90-9009686

APPENDIX: Weights of the Coins in the Dokkum Hoard (1932)

GRAMS	NUM.	REALM	CLASS	REMARKS
-------	------	-------	-------	---------

2.71	K083	Brabant	-	Vanhoudt G 295
------	------	---------	---	----------------

3.04	K200	Holland	-	Grolle 17.2.2
2.93	K090	Holland	-	Grolle 17.2.2
2.79	K006	Holland	-	Grolle 17.2.2
2.75	K047	Holland	-	Grolle 17.2.2
2.73	K222	Holland	-	Grolle 17.2.2
2.69	K173	Holland	-	Grolle 17.2.2
2.69	K340	Holland	-	Grolle 17.2.2
2.56	K131	Holland	-	Grolle 17.2.2
2.51	K018	Holland	-	Grolle 17.2.2
2.48	K190	Holland	-	Grolle 17.2.2
2.45	K086	Holland	-	Grolle 17.2.2
2.43	K005	Holland	-	Grolle 17.2.2
2.21	K087	Holland	-	Grolle 17.2.2

2.56	K089	Rethel	-	Gaillard 232
------	------	--------	---	--------------

3.27	K079	Flanders	III-9	pellet right of cross, leaf stem to F
2.55	K146	Flanders	III-9	pellet right of cross, leaf stem to F
2.90	K239	Flanders	III-9 or 10	pellet right of cross, leaf stem to F
2.70	K310	Flanders	IV-11	leaf stem towards F
2.31	K211	Flanders	IV-11	leaf stem towards F

3.23	K154	Flanders	V-12	
3.19	K283	Flanders	V-12	
3.17	K300	Flanders	V-12	
3.15	K096	Flanders	V-12	
3.05	K140	Flanders	V-12	
3.03	K236	Flanders	V-12	
2.97	K069	Flanders	V-12	
2.96	K008	Flanders	V-12	
2.96	K158	Flanders	V-12	
2.95	K023	Flanders	V-12	
2.95	K050	Flanders	V-12	
2.93	K293	Flanders	V-12	serif L, large V
2.91	K153	Flanders	V-12	
2.90	K262	Flanders	V-12	
2.89	K016	Flanders	V-12	
2.89	K066	Flanders	V-12	broken N
2.89	K261	Flanders	V-12	
2.89	K333	Flanders	V-12	
2.87	K045	Flanders	V-12	serif L, large V, leaf unclear
2.87	K121	Flanders	V-12	
2.86	K255	Flanders	V-12	serif L, large V, leaf unclear
2.85	K046	Flanders	V-12	
2.84	K039	Flanders	V-12	

GRAMS	NUM.	REALM	CLASS	REMARKS
2.84	K301	Flanders	V-12	serif L, large V, leaf unclear
2.84	K308	Flanders	V-12	
2.83	K041	Flanders	V-12	
2.82	K034	Flanders	V-12	
2.82	K043	Flanders	V-12	
2.82	K085	Flanders	V-12	
2.82	K185	Flanders	V-12	
2.82	K244	Flanders	V-12	
2.82	K245	Flanders	V-12	
2.81	K004	Flanders	V-12	serif L, large V
2.81	K318	Flanders	V-12	
2.80	K001	Flanders	V-12	
2.80	K097	Flanders	V-12	
2.80	K111	Flanders	V-12	serif L, large V
2.80	K199	Flanders	V-12	serif L, large V
2.79	K040	Flanders	V-12	
2.79	K080	Flanders	V-12	
2.79	K229	Flanders	V-12	broken N
2.79	K249	Flanders	V-12	
2.78	K065	Flanders	V-12	
2.78	K070	Flanders	V-12	
2.78	K115	Flanders	V-12	
2.78	K143	Flanders	V-12	
2.78	K258	Flanders	V-12	
2.78	K259	Flanders	V-12	
2.78	K291	Flanders	V-12	
2.78	K320	Flanders	V-12	
2.78	K325	Flanders	V-12	
2.78	K330	Flanders	V-12	
2.77	K099	Flanders	V-12	
2.77	K144	Flanders	V-12	
2.76	K107	Flanders	V-12	serif L, large V
2.76	K269	Flanders	V-12	
2.76	K270	Flanders	V-12	broken N
2.76	K290	Flanders	V-12	
2.75	K062	Flanders	V-12	serif L, large V
2.75	K132	Flanders	V-12	
2.75	K260	Flanders	V-12	serif L, large V
2.75	K271	Flanders	V-12	
2.74	K309	Flanders	V-12	
2.73	K028	Flanders	V-12	
2.73	K042	Flanders	V-12	
2.73	K100	Flanders	V-12	
2.73	K196	Flanders	V-12	
2.73	K198	Flanders	V-12	
2.73	K273	Flanders	V-12	
2.72	K105	Flanders	V-12	
2.72	K235	Flanders	V-12	
2.72	K307	Flanders	V-12	
2.72	K327	Flanders	V-12	broken N

GRAMS	NUM.	REALM	CLASS	REMARKS
2.71	K120	Flanders	V-12	
2.71	K147	Flanders	V-12	
2.71	K212	Flanders	V-12	
2.71	K238	Flanders	V-12	
2.71	K319	Flanders	V-12	serif L, large V
2.71	K324	Flanders	V-12	
2.70	K095	Flanders	V-12	
2.70	K266	Flanders	V-12	
2.70	K306	Flanders	V-12	
2.70	K314	Flanders	V-12	
2.70	K326	Flanders	V-12	
2.69	K020	Flanders	V-12	
2.69	K188	Flanders	V-12	
2.69	K201	Flanders	V-12	
2.69	K213	Flanders	V-12	
2.69	K217	Flanders	V-12	serif L, large V
2.69	K276	Flanders	V-12	
2.69	K329	Flanders	V-12	
2.68	K015	Flanders	V-12	
2.68	K030	Flanders	V-12	
2.67	K088	Flanders	V-12	
2.67	K134	Flanders	V-12	
2.67	K155	Flanders	V-12	
2.67	K164	Flanders	V-12	
2.67	K272	Flanders	V-12	
2.66	K141	Flanders	V-12	
2.66	K159	Flanders	V-12	serif L, large V
2.65	K044	Flanders	V-12	
2.64	K060	Flanders	V-12	serif L, large V
2.64	K136	Flanders	V-12	
2.64	K167	Flanders	V-12	
2.64	K228	Flanders	V-12	
2.64	K294	Flanders	V-12	
2.63	K103	Flanders	V-12	
2.63	K230	Flanders	V-12	
2.62	K074	Flanders	V-12	serif L, large V
2.62	K226	Flanders	V-12	
2.61	K009	Flanders	V-12	
2.61	K053	Flanders	V-12	
2.61	K082	Flanders	V-12	serif L, large V
2.61	K160	Flanders	V-12	
2.60	K215	Flanders	V-12	
2.60	K289	Flanders	V-12	serif L, large V
2.59	K118	Flanders	V-12	
2.59	K150	Flanders	V-12	serif L, large V
2.59	K161	Flanders	V-12	countermarked
2.59	K231	Flanders	V-12	broken N
2.59	K341	Flanders	V-12	
2.58	K264	Flanders	V-12	
2.58	K316	Flanders	V-12	

GRAMS	NUM.	REALM	CLASS	REMARKS
2.57	K010	Flanders	V-12	
2.57	K025	Flanders	V-12	
2.57	K109	Flanders	V-12	
2.57	K165	Flanders	V-12	
2.57	K170	Flanders	V-12	
2.56	K002	Flanders	V-12	
2.56	K138	Flanders	V-12	
2.55	K051	Flanders	V-12	serif L, large V
2.55	K093	Flanders	V-12	serif L, large V
2.55	K114	Flanders	V-12	serif L, large V
2.55	K172	Flanders	V-12	
2.55	K251	Flanders	V-12	
2.55	K295	Flanders	V-12	
2.54	K007	Flanders	V-12	
2.54	K036	Flanders	V-12	
2.54	K055	Flanders	V-12	
2.54	K063	Flanders	V-12	
2.54	K126	Flanders	V-12	
2.54	K180	Flanders	V-12	serif L, large V
2.54	K344	Flanders	V-12	
2.53	K071	Flanders	V-12	serif L, large V
2.53	K149	Flanders	V-12	
2.53	K234	Flanders	V-12	
2.53	K241	Flanders	V-12	
2.52	K075	Flanders	V-12	
2.52	K081	Flanders	V-12	
2.52	K305	Flanders	V-12	serif L, large V
2.51	K037	Flanders	V-12	
2.50	K152	Flanders	V-12	
2.50	K183	Flanders	V-12	
2.50	K278	Flanders	V-12	
2.49	K068	Flanders	V-12	
2.49	K204	Flanders	V-12	
2.49	K216	Flanders	V-12	
2.49	K280	Flanders	V-12	
2.48	K157	Flanders	V-12	
2.48	K207	Flanders	V-12	
2.48	K342	Flanders	V-12	
2.47	K027	Flanders	V-12	
2.47	K056	Flanders	V-12	
2.47	K104	Flanders	V-12 ?	Pellet after O of COMES ?
2.47	K209	Flanders	V-12	
2.47	K224	Flanders	V-12	
2.46	K240	Flanders	V-12	
2.42	K250	Flanders	V-12	
2.42	K315	Flanders	V-12	
2.41	K202	Flanders	V-12	
2.41	K205	Flanders	V-12	
2.41	K214	Flanders	V-12	
2.40	K192	Flanders	V-12	

GRAMS	NUM.	REALM	CLASS	REMARKS
2.40	K252	Flanders	V-12	
2.39	K145	Flanders	V-12	serif L, large V
2.37	K129	Flanders	V-12	medieval counterfeit?
2.34	K029	Flanders	V-12	
2.34	K253	Flanders	V-12	serif L, large V
2.33	K116	Flanders	V-12	
2.32	K313	Flanders	V-12	
2.31	K130	Flanders	V-12	serif L, large V
2.29	K292	Flanders	V-12	serif L, large V
2.27	K106	Flanders	V-12	
2.27	K233	Flanders	V-12	
2.25	K243	Flanders	V-12	
2.24	K343	Flanders	V-12	
2.19	K113	Flanders	V-12	
2.16	K322	Flanders	V-12	
2.10	K162	Flanders	V-12	
2.07	K054	Flanders	V-12	serif L, large V
2.05	K332	Flanders	V-12	broken coin

2.36	K203	Flanders	V-13	broken coin
1.68	K338	Flanders	V-13	medieval counterfeit ?
2.73	K166	Flanders	VI-16	barless A's, pellet-foot N
2.72	K331	Flanders	VI-16	barless A's, pellet-foot N
2.71	K122	Flanders	VI-16	barless A's
2.70	K171	Flanders	VI-16	barless A's, pellet-foot N
2.68	K061	Flanders	VI-16	barless A's
2.66	K221	Flanders	VI-16	barless A's, pellet-foot N
2.57	K011	Flanders	VI-16	barless A's, pellet-foot N
2.57	K098	Flanders	VI-16	barless A's, pellet-foot N
2.57	K135	Flanders	VI-16	barless A's, pellet-foot N
2.54	K101	Flanders	VI-16	barless A's, pellet-foot N
2.53	K220	Flanders	VI-16	barless A's, pellet-foot N
2.43	K287	Flanders	VI-16	barless A's
2.41	K312	Flanders	VI-16	barless A's
2.07	K156	Flanders	VI-16	barless A's, pellet-foot N
2.86	K296	Flanders	VII-17	pellets over L's
2.83	K142	Flanders	VII-17	pellets over L's
2.83	K073	Flanders	VII-17	pellets over L's
2.74	K059	Flanders	VII-17	pellets over L's
2.73	K077	Flanders	VII-17	pellets over L's
2.73	K311	Flanders	VII-17	pellets over L's
2.72	K176	Flanders	VII-17	pellets over L's (unclear)
2.71	K024	Flanders	VII-17	pellets over L's
2.71	K076	Flanders	VII-17	pellets over L's
2.67	K112	Flanders	VII-17	pellets over L's
2.65	K297	Flanders	VII-17	pellets over L's
2.63	K014	Flanders	VII-17	pellets over L's
2.61	K017	Flanders	VII-17	pellets over L's
2.60	K091	Flanders	VII-17	pellets over L's
2.60	K133	Flanders	VII-17	pellets over L's

GRAMS	NUM.	REALM	CLASS	REMARKS
2.59	K275	Flanders	VII-17	pellets over L's
2.52	K092	Flanders	VII-17	pellets over L's
2.51	K048	Flanders	VII-17	pellets over L's
2.50	K169	Flanders	VII-17	pellets over L's
2.48	K189	Flanders	VII-17	pellets over L's
2.45	K257	Flanders	VII-17	pellets over L's
2.40	K022	Flanders	VII-17	pellets over L's
2.39	K191	Flanders	VII-17	pellets over L's
2.32	K019	Flanders	VII-17	pellets over L's
2.29	K210	Flanders	VII-17	pellets over L's
2.22	K072	Flanders	VII-17	pellets over L's
2.22	K110	Flanders	VII-17	pellets over L's
2.21	K242	Flanders	VII-17	pellets over L's
2.15	K195	Flanders	VII-17	pellets over L's
1.95	K102	Flanders	VII-17	pellets over L's
1.87	K128	Flanders	VII-17	pellets over L's
1.72	K281	Flanders	VII-17	pellets over L's
2.89	K254	Flanders	VII-17 / 18	pellets over L's
2.79	K336	Flanders	VII-17 / 18	pellets over L's
2.78	K035	Flanders	VII-17 / 18	pellets over L's
2.74	K117	Flanders	VII-17 / 18	pellets over L's (unclear)
2.74	K181	Flanders	VII-17 / 18	pellets over L's
2.66	K225	Flanders	VII-17 / 18	pellets over L's
2.63	K094	Flanders	VII-17 / 18	pellets over L's
2.63	K206	Flanders	VII-17 / 18	pellets over L's (unclear)
2.63	K299	Flanders	VII-17 / 18	pellets over L's
2.60	K197	Flanders	VII-17 / 18 ?	pellet L's / 5-lobed border leaves?
2.58	K218	Flanders	VII-17 / 18	pellets over L's
2.52	K127	Flanders	VII-17 / 18	pellets over L's
2.48	K052	Flanders	VII-17 / 18	pellets over L's (unclear)
2.47	K026	Flanders	VII-17 / 18	pellets over L's (unclear)
2.41	K067	Flanders	VII-17 / 18	pellets over L's
2.36	K279	Flanders	VII-17 / 18	pellets over L's
2.23	K139	Flanders	VII-17 / 18	pellets over L's
2.16	K268	Flanders	VII-17 / 18	pellets over L's
2.75	K163	Flanders	VII-18 var.	Annulet A, plain T
2.33	K323	Flanders	VIII-19 ?	pellets over L's (annulet?)

Unusable coins:

GRAMS	NUM.	REALM	CLASS	REMARKS
3.20	K263	Flanders	V-12 ?	leaf unclear
2.96	K237	Flanders	?	indeterminate A's
2.95	K288	Flanders	V-12	A unclear
2.91	K232	Flanders	V-12 ?	leaf unclear
2.90	K137	Flanders	?	<i>illegible</i>
2.87	K194	Flanders	V-12 ?	leaf unclear
2.85	K219	Flanders	V-12 ?	leaf unclear
2.83	K334	Flanders	?	indeterminate A's
2.81	K003	Flanders	V-12 ?	leaf unclear
2.81	K193	Flanders	V-12 ?	leaf unclear
2.80	K013	Flanders	?	indeterminate A's
2.79	K174	Flanders	?	indeterminate A's
2.78	K304	Flanders	V-12 ?	leaf unclear
2.76	K277	Flanders	?	indeterminate A's
2.75	K151	Flanders	V-12 ?	leaf unclear
2.74	K247	Flanders	?	<i>illegible</i>
2.74	K267	Flanders	?	<i>illegible</i>
2.73	K031	Flanders	V-12 ?	leaf unclear
2.73	K049	Flanders	V-12 ?	leaf unclear
2.72	K175	Flanders	V-12 ?	leaf unclear
2.71	K248	Flanders	?	indeterminate A's
2.70	K078	Flanders	V-12 ?	cross illegible
2.69	K124	Flanders	V-12 ?	leaf unclear
2.68	K084	Flanders	?	<i>illegible</i>
2.68	K246	Flanders	?	<i>illegible</i>
2.68	K256	Flanders	?	indeterminate A's
2.68	K317	Flanders	?	<i>illegible</i>
2.67	K321	Flanders	V-12 ?	leaf unclear
2.66	K021	Flanders	V-12 ?	leaf unclear
2.66	K057	Flanders	V-12 ?	cross illegible
2.64	K064	Flanders	?	indeterminate A's
2.63	K119	Flanders	?	<i>illegible</i>
2.63	K186	Flanders	?	indeterminate A's
2.62	K286	Flanders	?	indeterminate A's
2.62	K328	Flanders	V-12	leaf unclear
2.61	K223	Flanders	V-12	leaf unclear
2.61	K284	Flanders	?	<i>illegible</i>
2.60	K012	Flanders	?	leaf / A unclear
2.59	K285	Flanders	?	indeterminate A's
2.58	K208	Flanders	V-12 ?	cross illegible
2.55	K227	Flanders	V-12 ?	leaf unclear
2.54	K058	Flanders	V-12 ?	straight stem?
2.53	K335	Flanders	?	<i>illegible</i>
2.52	K274	Flanders	?	A unclear
2.52	K337	Flanders	?	<i>illegible</i>
2.51	K108	Flanders	V-12 ?	leaf unclear

GRAMS	NUM.	REALM	CLASS	REMARKS
2.51	K179	Flanders	V-12	cross illegible
2.50	K123	Flanders	?	<i>illegible</i>
2.49	K177	Flanders	?	A unclear
2.49	K339	Flanders	?	leaf unclear
2.48	K148	Flanders	?	indeterminate A's
2.46	K182	Flanders	?	indeterminate A's
2.45	K187	Flanders	V-12 ?	leaf unclear
2.45	K282	Flanders	?	indeterminate A's
2.45	K298	Flanders	?	indeterminate A's
2.44	K184	Flanders	V-12 ?	leaf unclear
2.39	K125	Flanders	?	indeterminate A's
2.39	K178	Flanders	?	indeterminate A's
2.38	K168	Flanders	?	indeterminate A's
2.37	K302	Flanders	V-12 ?	A unclear
2.34	K032	Flanders	V-12	<i>illegible</i>
2.34	K038	Flanders	?	indeterminate A's
2.29	K303	Flanders	V-12 ?	A unclear
2.21	K265	Flanders	?	indeterminate A's
2.17	K033	Flanders	V-12 ?	leaf unclear